

## DIRECTIONAL CONTROL VALVES

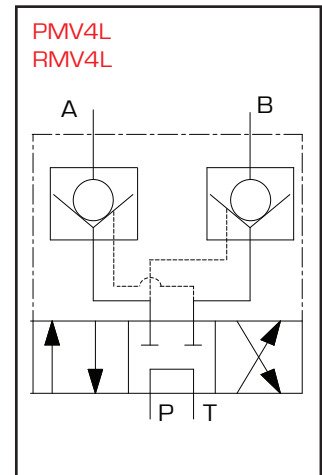
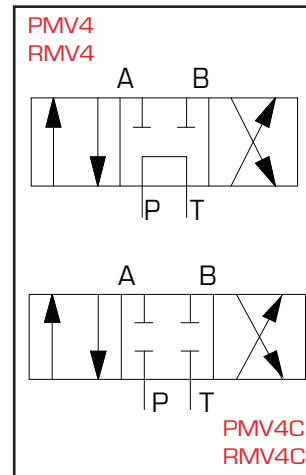
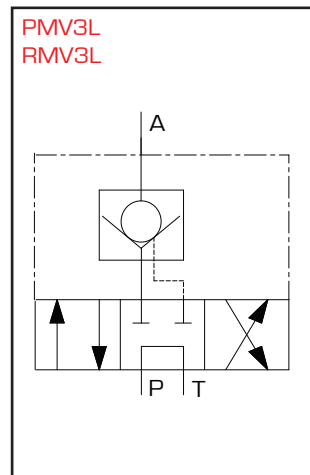
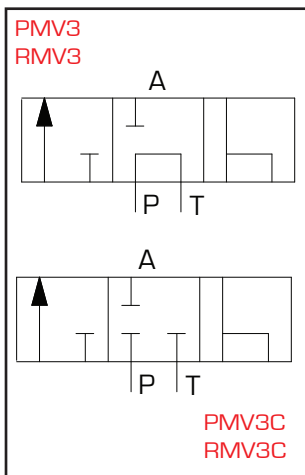
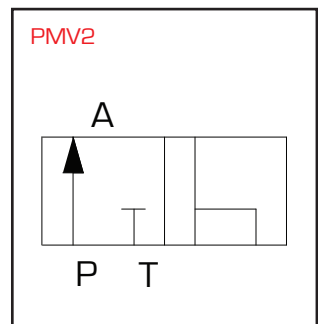


Working pressure 700 Bar

Pump or remote mounted design

Manual or solenoid options available

Hi-Force control valves are designed to provide precise control of the hydraulic system either by accurate pressure or directional flow control. The PMV range of pump mounted valves is identical to the valves fitted to the Hi-Force powered pumps featured on pages 41-43, 44-45, 48, 49 and can be easily interchanged, making your powered pump even more versatile. The RMV range allows for remote mounting away from the pump. Always specify Hi-Force control valves for use with your Hi-Force hydraulic tools. Flow control valves are featured on the next page.



Directional control valves :

Description	Model number			
	Manual valve no load holding	Manual valve with load holding	Solenoid valve 24V incl. control	Manual valve closed centre
Pump mounted, 2-way, 2 position valve	<b>PMV2</b>	-	-	-
Pump mounted, 3-way, 3 position valve	<b>PMV3</b>	<b>PMV3L</b>	<b>PMV3S</b>	<b>PMV3C</b>
Pump mounted, 4-way, 3 position valve	<b>PMV4</b>	<b>PMV4L</b>	<b>PMV4S</b>	<b>PMV4C</b>
Remote mounted, 3-way, 3 position valve	<b>RMV3</b>	<b>RMV3L</b>	<b>RMV3S</b>	<b>RMV3C</b>
Remote mounted, 4-way, 3 position valve	<b>RMV4</b>	<b>RMV4L</b>	<b>RMV4S</b>	<b>RMV4C</b>