

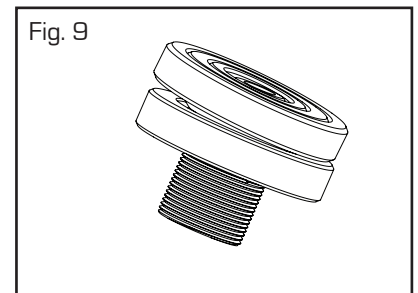
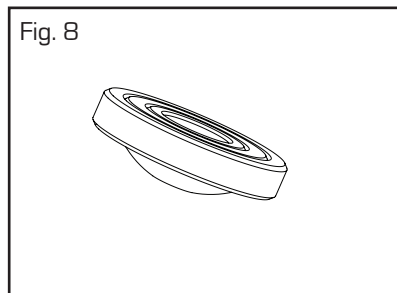
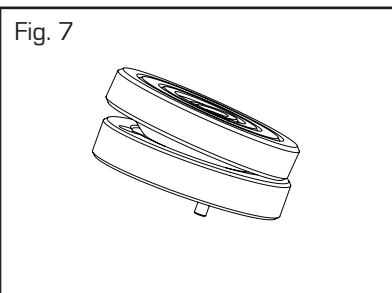
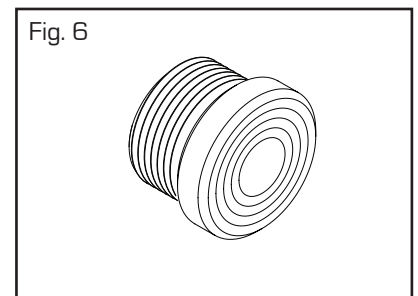
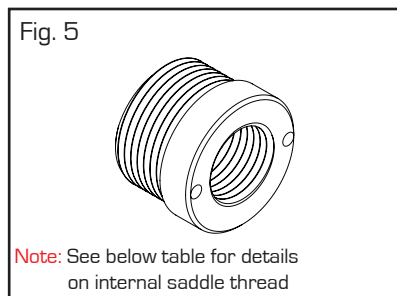
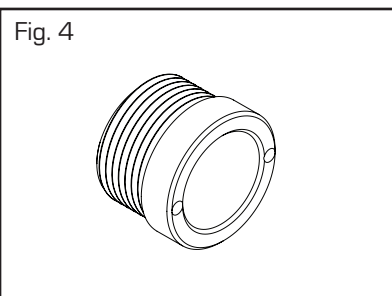
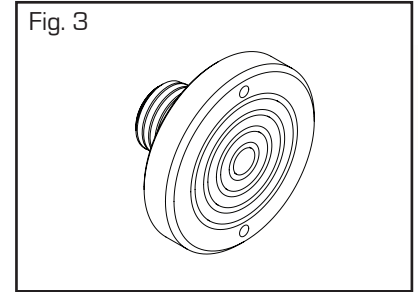
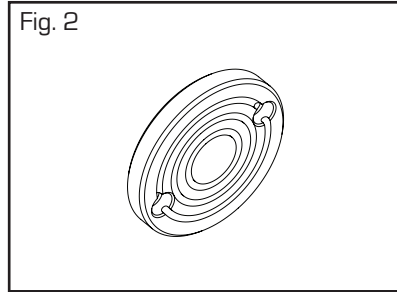
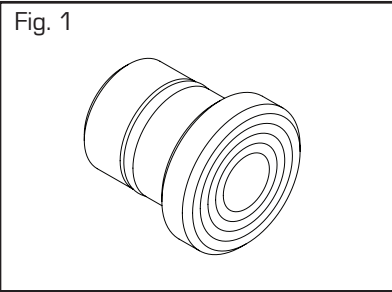
CYLINDER SADDLES & PISTON ROD THREAD SPECIFICATIONS

B

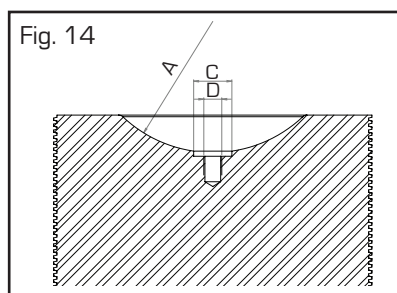
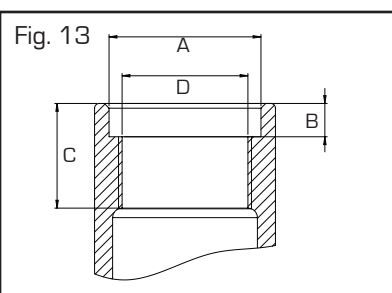
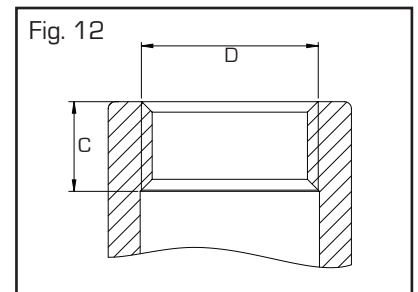
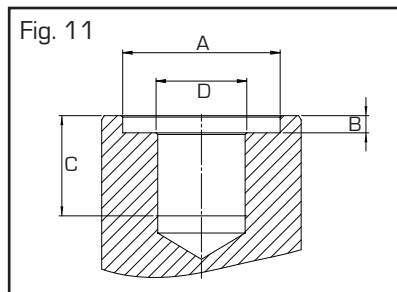
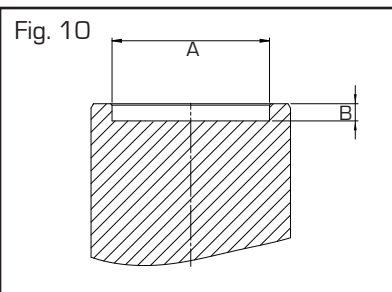
Cylinder Range	Saddles				Piston rod thread				
	Standard Saddle		Optional Saddle		Dimensions in mm			Thread Size	Figure
	Model No.	Figure	Model No.	Figure	A	B	C	D	
HSS Cylinder Range									
HSS5	HA5	1	-	-	-	-	20	¾"-16UNF	12
HSS10	HA10	1	HAT10	9	-	-	14	1"-8UNC	12
HSS15	HA15	1	HAT10	9	-	-	14	1"-8UNC	12
HSS25	HA25	1	HAT25	9	-	-	30	1½"-16UN	12
HSS30	HA25	1	HAT25	9	-	-	30	1½"-16UN	12
HSS50	HA50	2	HAT50	7	70	11	-	-	10
HSS75	HA75	2	HAT75	7	80	12	-	-	10
HSS100	HA100	2	HAT100	7	100	12	-	-	10
HAS Cylinder Range									
HAS30	HA30	2	HAT30	7	50	10	-	-	10
HAS50	HA50	2	HAT50	7	70	11	-	-	10
HAS100	HA100	2	HAT100	7	100	12	-	-	10
HHS Cylinder Range									
HHS11	HA102	4	HA102T, HA102G	5,6	32	7	21	M28x1.5	13
HHS23	HA202	4	HA202T, HA202G	5,6	43	10	31	M39x1.5	13
HHS33	HA302	4	HA302T, HA302G	5,6	52	10	31	M48x1.5	13
HHS61	HA603	4	HA603T, HA603G	5,6	80	10	31	M70x1.5	13
HHS102	HA1003	4	HA1003T, HA1003G	5,6	114	12	38	M105x2	13
HHA Cylinder Range									
HHA18	HA18	4	HA18T	5	-	-	28	M35x1.5	12
HHA37	HA37	4	HA37T	5	-	-	35	M50x1.5	12
HHA50	HA50	4	HA50T	5	-	-	37	M60x1.5	12
HHR Cylinder Range									
HHR33	HA302	4	HA302T, HA302G	5,6	52	10.0	32	M48x1.5	13
HHR61	HA603	4	HA603T, HA603G	5,6	80	10.0	32	M70x1.5	13
HHR102	HA1003	4	HA1003T, HA1003G	5,6	114	12.0	38	M105x2	13
HHR150	HA1508	4	HA1508G	6	170	13.5	50	M150x3	13
HHR250	HA2508	4	HA2508G	6	242	13.5	74	M220x3	13
HDA Cylinder Range									
HDA25	HD25	3	HD25T	9	45	9	35	1"-12UNF	11
HDA50	HD50	3	HD50T	9	70	11	45	1"-12UNF	11
HDA100	HD100	3	HD100T	9	100	12	55	1¾"-12UNF	11
HDA150	HD200	3	HD200T	9	100	12	52	2½"-12UNF	11
HDA200	HD200	3	HD200T	9	110	12	70	2½"-12UNF	11
HDA300	HD300T	7	HD300	2	150	25	-	-	-
HDA400	HD400T	7	HD400	2	180	25	-	-	-
HDA500	HD500T	7	HD500	2	180	25	-	-	-
HDA800	TS800	8	-	-	180	-	51	M24x3	14
HDA1000	TS1000	8	-	-	180	-	51	M24x3	14
HFG Cylinder Range									
HFG50	TS50	8	-	-	15	-	30	M8x1.25	14
HFG100	TS100	8	-	-	18	-	60	M12x1.75	14
HFG150	TS150	8	-	-	18	-	60	M12x1.75	14
HFG200	TS200	8	-	-	18	-	60	M12x1.75	14
HFG300	TS300	8	-	-	16	-	70	M10x1.5	14
HFG400	TS400	8	-	-	17	-	125	M12x1.75	14
HFG500	TS500	8	-	-	17	-	125	M12x1.75	14
HFG800	TS800	8	-	-	50	-	175	M24x3	14
HFG1000	TS1000	8	-	-	51	-	175	M24x3	14
HFL Cylinder Range									
HFL50	TS50	8	-	-	15	-	31	M8x1.25	14
HFL100	TS100	8	-	-	18	-	60	M12x1.75	14
HFL150	TS150	8	-	-	18	-	120	M12x1.75	14
HFL250	TS250	8	-	-	40	-	140	M10x1.5	14
HFL400	TS400	8	-	-	40	-	180	M12x1.75	14
HFL500	TS500	8	-	-	40	-	200	M12x1.75	14
HGG Cylinder Range									
HGG150	TS150	8	-	-	18	-	60.0	M12x1.75	14
HGG200	TS201	8	-	-	18	-	124.5	M12x1.75	14
HGG300	TS301	8	-	-	21	-	95.0	M12x1.75	14
HSG Cylinder Range									
HSG150	TS150	8	-	-	18	-	60.0	M12x1.75	14
HSG200	TS201	8	-	-	18	-	124.5	M12x1.75	14
HSG300	TS302	8	-	-	28	-	160.0	M22x2.5	14

CYLINDER SADDLES & PISTON ROD THREAD SPECIFICATIONS

SADDLE DRAWINGS (for specifications, see facing page)



PISTON ROD DRAWINGS (for specifications, see facing page)



Saddle Model	Internal saddle thread specification
HA18T	M24
HA37T	M36
HA50T	M48
HA102T	$\frac{3}{4}$ " - 16 UNF
HA202T	1" x 8 UNC
HA302T	1 $\frac{1}{4}$ " x 7 UNC
HA603T	1 $\frac{5}{8}$ " x 5 $\frac{1}{2}$ " UNS
HA1003T	2 $\frac{1}{2}$ " x 8 UN